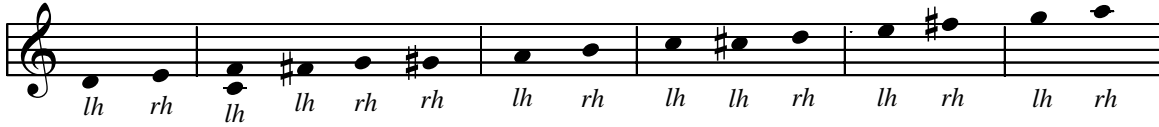


Amazing Grace

Six Ringers



Three Ringers:*

Part 1: lh: D5,F#5; D5,F5; D5,C5
rh: E5,G5; E5,G#5
Part 2: lh: A5,C#6; A5,C6
rh: B5,D6
Part 3: lh: E6,G6 rh: F#6,A6

Four Ringers:*

Part 1: lh: D5 rh: E5
Part 2: lh: F#5; F5; C5
rh: G5; G#5
Part 3: lh: A5,C#6; A5,C6 rh: B5,D6
Part 4: lh: E6,G6 rh: F#6,A6

Five Ringers:*

Part 1: lh: D5; rh: E5
Part 2: lh: F#5; F5; C5 rh: G5; G#5
Part 3: lh: A5; rh: B5
Part 4: lh: C#6; C6 rh: D6
Part 5: lh: E6,G6 rh: F#6,A6

*Pick up 4-in-hand bells in order listed. Ring independently or simultaneously (with a quick rotation at the point of impact.) Semicolon indicates additional set-up(s).

NEW BRITAIN

Virginia Harmony, 1831

Arranged by Linda R. Lamb

Bell Assignments by Ardis Freeman

Slowly (♩ = 76)

Copyright © 2007 Cantabile Press. All rights reserved. Printed in U.S.A.
Reproduction of all or any portion in any form is prohibited without permission of the publisher.

The CCLI license does not grant permission to photocopy this music.

How Firm a Foundation

Six Ringers

Three Ringers:*
 Part 1: lh: Bb4, D5; Bb4, Db5
 rh: C5, Eb5
 Part 2: lh: F5; F5, Ab5 rh: G5, Bb5
 Part 3: lh: C6; C6, Eb6
 rh: D6, F6; Db6; Ab4

Four Ringers:*
 Part 1: lh: Bb4; rh: C5
 Part 2: lh: D5; Db5 rh: Eb5
 Part 3: lh: F5; F5/Ab5; rh: G5, Bb5
 Part 4: lh: C6; C6, Eb6
 rh: D6, F6; Db6; Ab4

Five Ringers:*
 Part 1: lh: Bb4; rh: C5
 Part 2: lh: D5; Db5 rh: Eb5
 Part 3: lh: F5; rh: G5
 Part 4: lh: Ab5; rh: Bb5
 Part 5: lh: C6; C6, Eb6;
 rh: D6, F6; Db6; Ab4

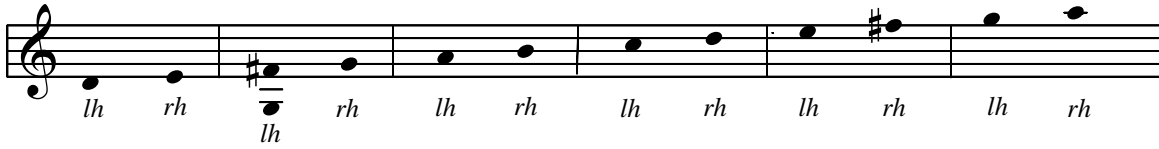
*Pick up 4-in-hand bells in order listed. Ring independently or simultaneously (with a quick rotation at the point of impact.) Semicolon indicates additional set-up(s).

FOUNDATION
 Funk's *Genuine Church Music*, 1832
 Arranged by Linda R. Lamb
 Bell Assignments by Ardis Freeman

Sturdily (♩ = 116)

Brethren, We Have Met to Worship

Six Ringers



Three Ringers:*
 Part 1: lh: D5,F#5; D5,G4
 rh: E5,G5
 Part 2: lh: A5,C6; rh: B6,D6
 Part 3: lh: E6,G6
 rh: F#6,A6

Four Ringers:*
 Part 1: lh: D5; rh: E5
 Part 2: lh: F#5; G4 rh: G5
 Part 3: lh: A5,C6; rh: B5,D6
 Part 4: lh: E6,G6
 rh: F#6,A6

Five Ringers:*
 Part 1: lh: D5; rh: E5
 Part 2: lh: F#5; G4; rh: G5
 Part 3: lh: A5; rh: B5
 Part 4: lh: C6; rh: D6
 Part 5: lh: E6,G6; rh: F#6,A6

*Pick up 4-in-hand bells in order listed. Ring independently or simultaneously (with a quick rotation at the point of impact.) Semicolon indicates additional set-up(s).

HOLY MANNA

Columbian Harmony, 1825

Arranged by Linda R. Lamb

Bell Assignments by Ardis Freeman

With vigor! (♩ = 104)



17 *mf* 18 19 20

21 *mp* 22 23 *mf* 24

25 26 27 28

29 30 31 *f* 32

33 34 35 *mf* 36

37 38 39 *mp* 40

41 42 43 *mf* 44